



DEVELOPERS :
AVADH REALITY

SITE:
SITE: "AMARDEEP SKY",
NEAR MADHUVAN PALACE,
NR. KARMA LIFESTYLE, GADA CIRCLE,
HARNI ROAD, VADODARA.

CONTACT :
+91 98795 59399, 89800 18080
TOLL FREE - 1800 5727 191
EMAIL: AMARDEEPSKY21@GMAIL.COM

Architect:
ASQUARE
ARCHITECT & INTERIOR DESIGNER

Structure :
ASHOK SHAH
& ASSOCIATES

www.amargroupvadodara.com

HONEST CR_98243 85808



॥ श्री गणेशाय नमः ॥
॥ श्री जनकीवल्लभो विजयते ॥

AMARDEEP SKY

3 & 4 BHK PREMIUM FLATS
(4 SIDE OPEN)



www.amargroupvadodara.com



DREAM-LIKE
HONES DO
EXIST.

AMARDEEP
SKY

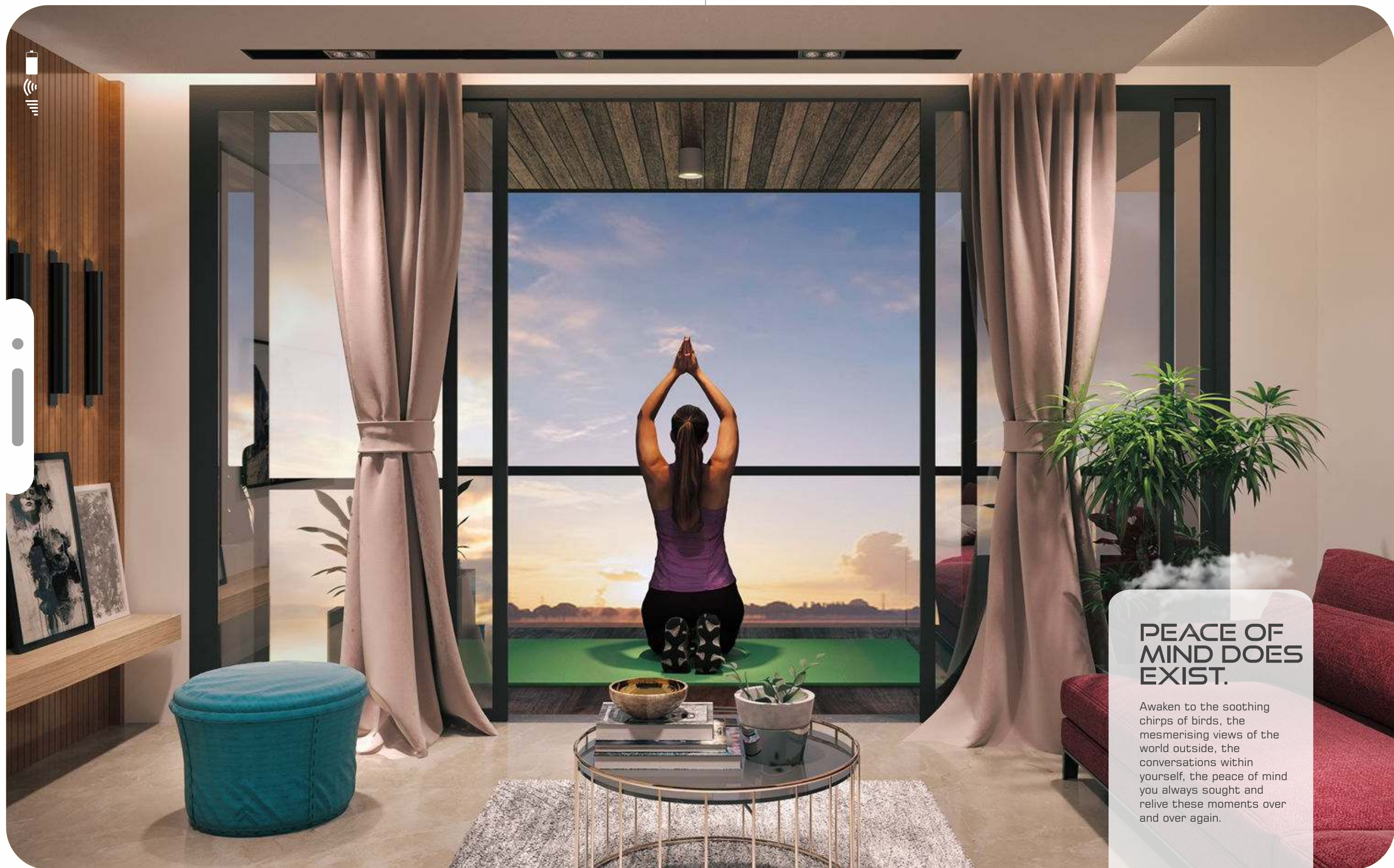
At Amardeep Sky, every moment spent is as perfect as the dreams you dreamt. The perfect combination of luxury and convenience for your loved ones to live in forever.



GRANDEUR
DOES MAKE
AN IMPRESSION.

AMARDEEP
SKY

Amardeep Sky offers you a grand entry to a world that you always dreamt of. Right from the entry point to the interior of your home, everything is aptly designed to suit your style and luxury quotient.



PEACE OF MIND DOES EXIST.

Awaken to the soothing chirps of birds, the mesmerising views of the world outside, the conversations within yourself, the peace of mind you always sought and relive these moments over and over again.



YOUR HEADLINE HERE

Duis aliquip ea velit dolores. Sadipscing
invidunt dolor commodo tempor ipsum.
Vero gubergren magna at sed justo
dolores stet. Tincidunt lorem adipiscing
magna blandit. Ex nulla enim justo
nonummy. Sed tempor voluptua. Ipsum
tempor vero





BLISSFUL LIVING DOES EXIST

With meticulous landscaping
and wide well-designed spaces,
your life here brings bliss and
joy with every passing moment.



TOWER B 4 BHK

A
FULFILLING
LIFESTYLE
DOES
EXIST.

Limited number of apartments occupied by like-minded families makes Amardeep Sky a suitable home for families seeking a totally relaxed and fulfilling lifestyle.



THE NATURE CONNECT DOES EXIST.

Surrounded by the beauty of Mother Nature, these homes enable great peace, opulence and luxury. With a well-appointed club and a soothing neighborhood, Amardeep Sky is where you connect to nature and vice versa.





**A
BEAUTIFUL
LIFE DOES
EXIST.**

Right from connectivity to great green surroundings and all amenities appointed precisely for your daily needs, these homes promise nothing less than a perfectly beautiful life.





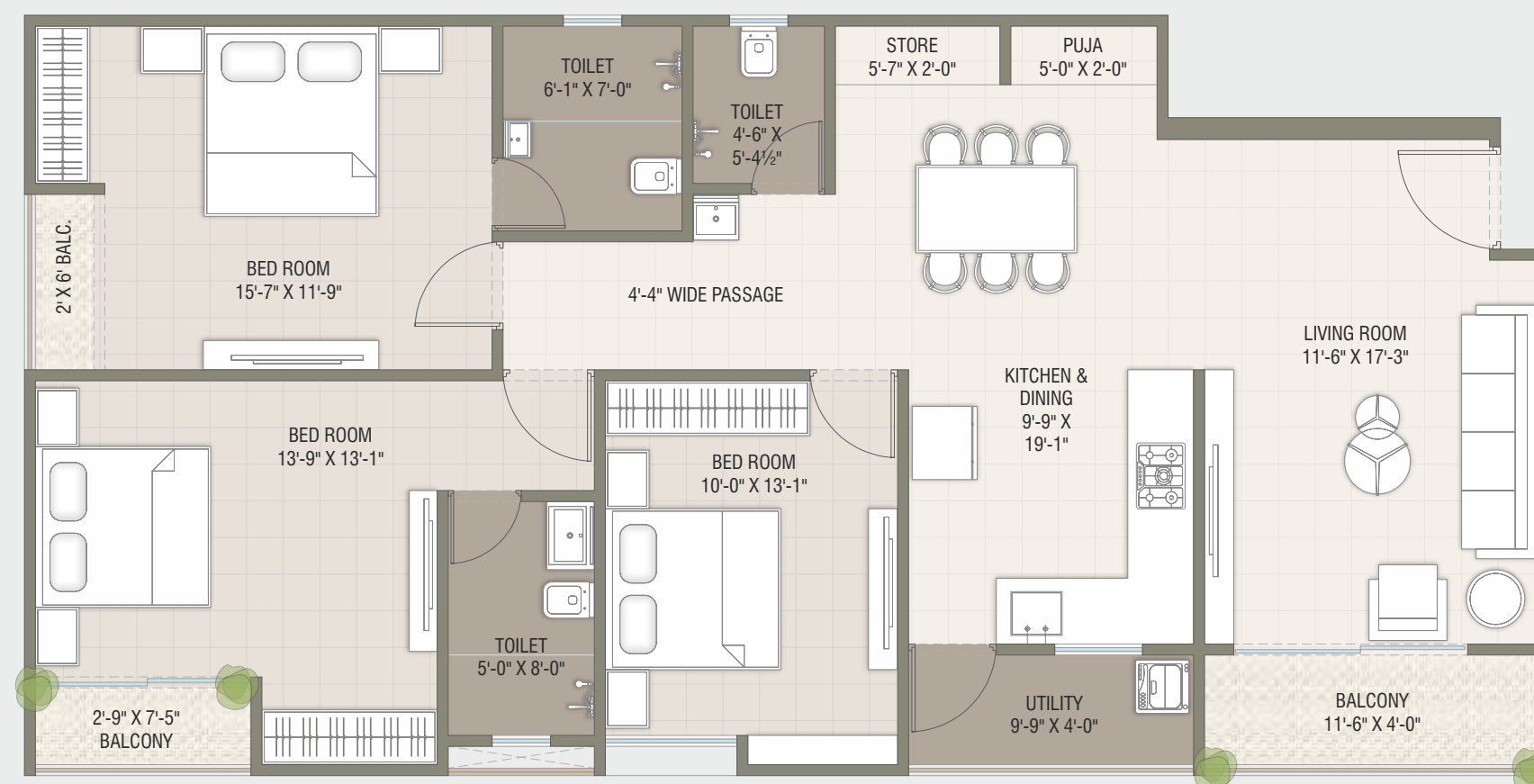
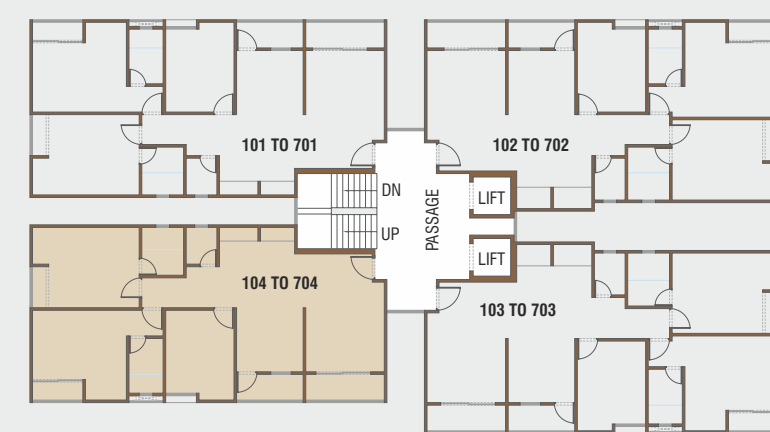
TYPICAL FLOOR PLAN





UNIT PLAN
TOWER-A
3 BHK

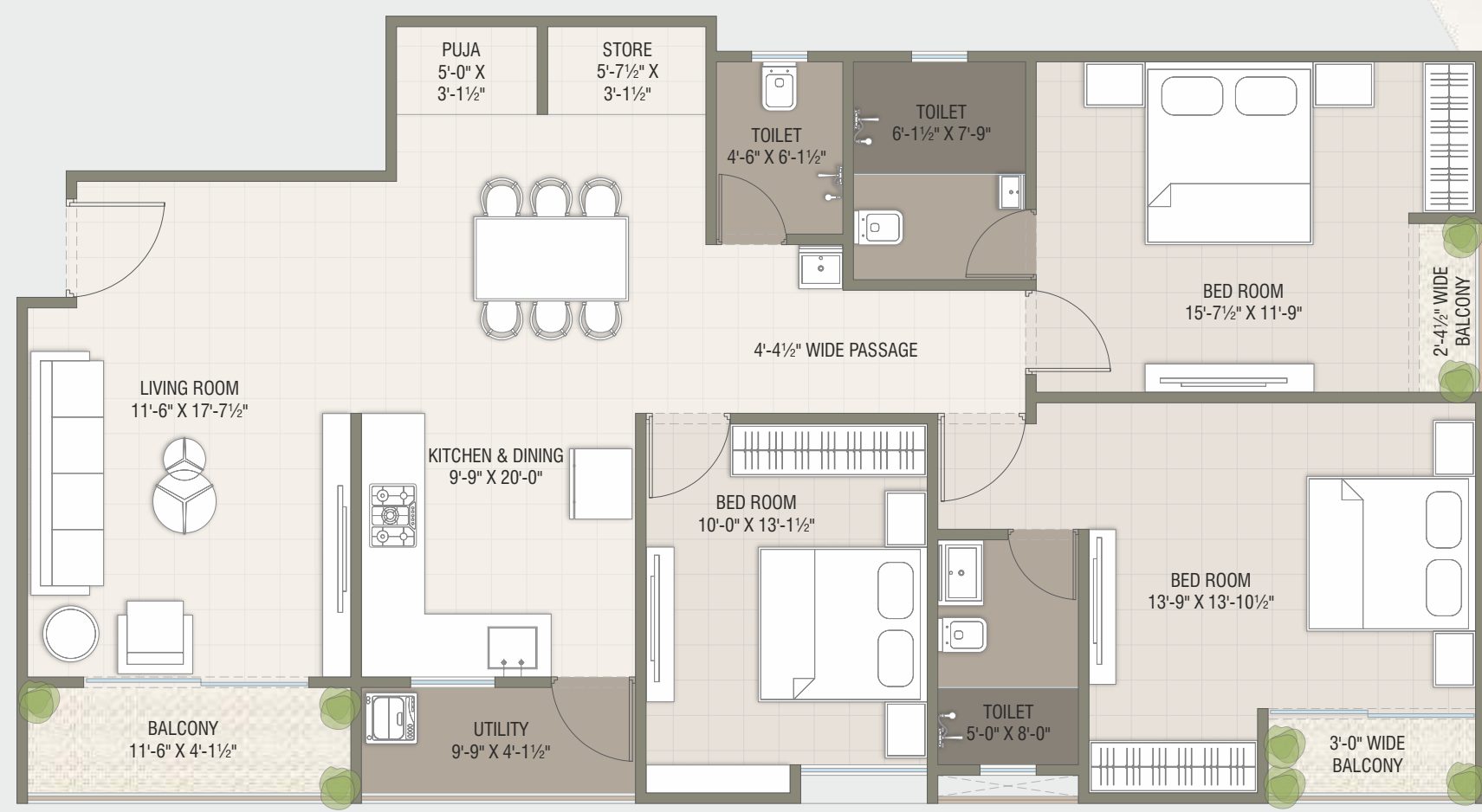
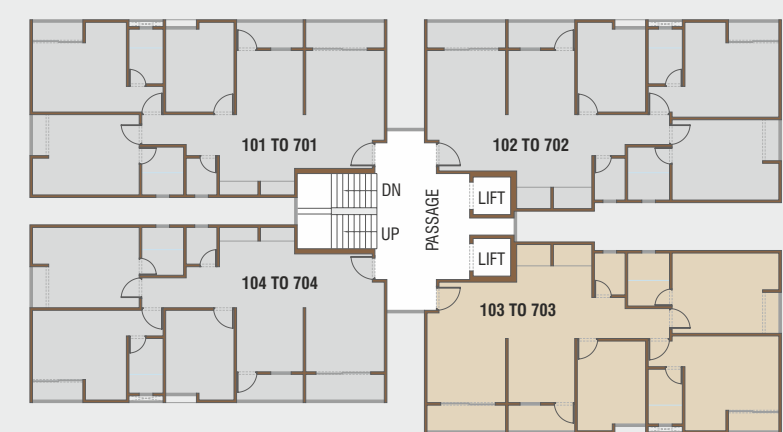
TOWER-A

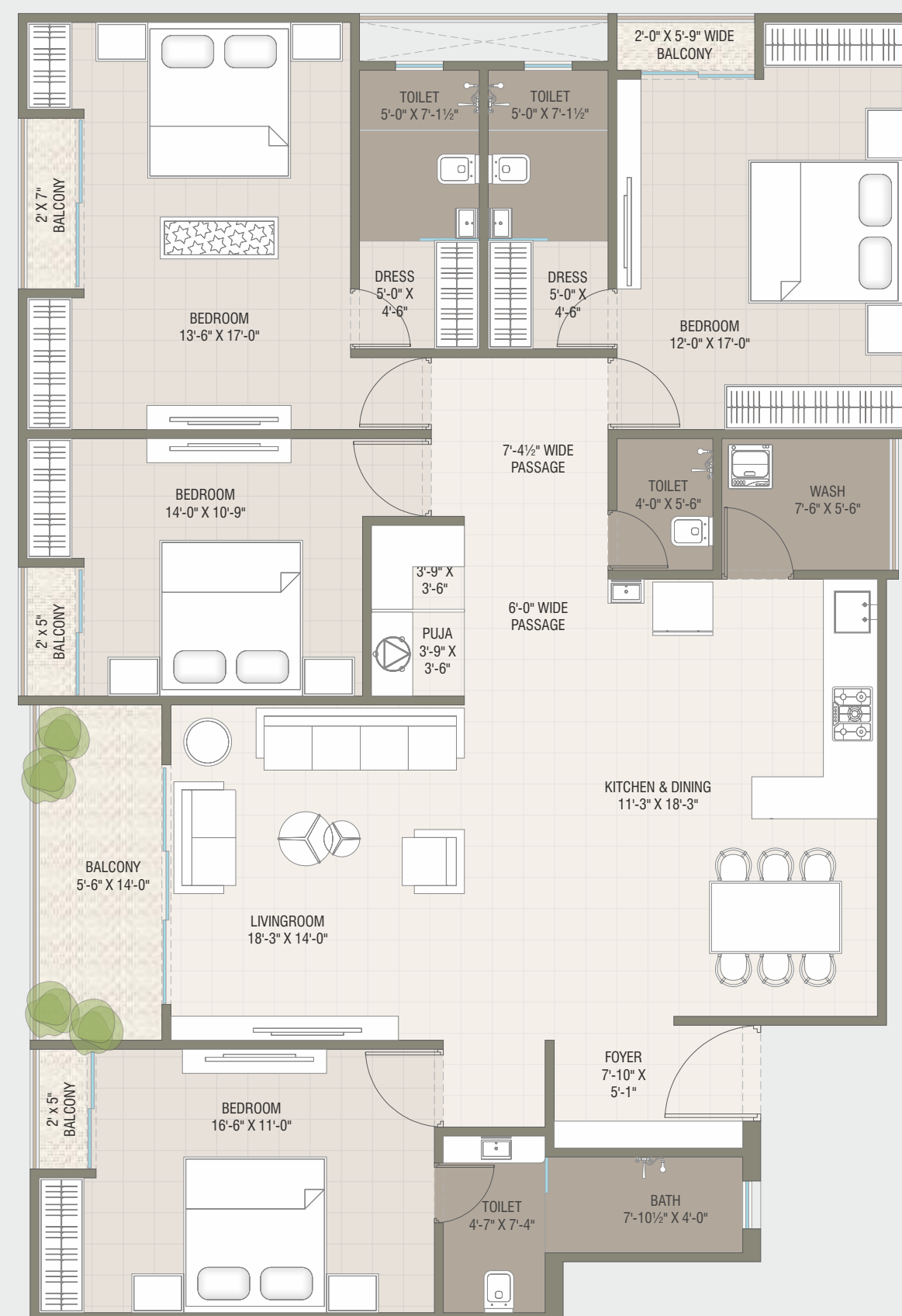




UNIT PLAN
TOWER-A
3 BHK

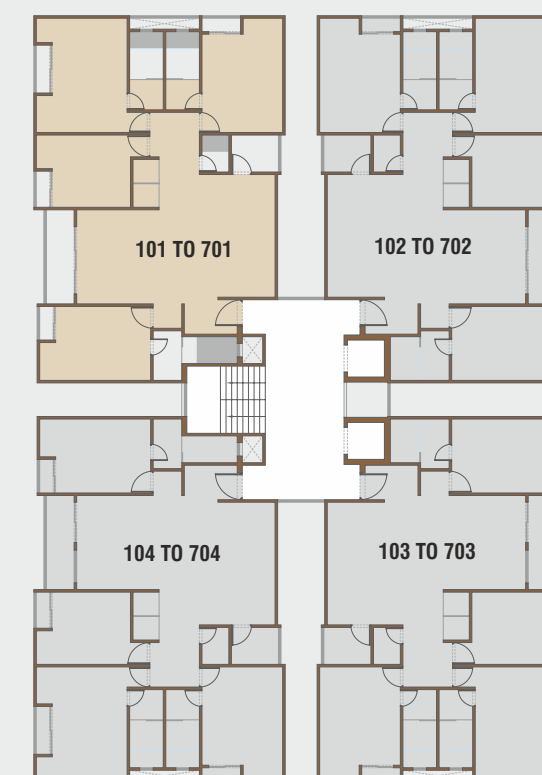
TOWER-A





UNIT PLAN TOWER-B 4 BHK

TOWER-B





VALUABLE AMENITIES



Elegant Entrance
Gate with
Security Cabin



Video
Door
System



24x7 CCTV



RO System for
Health & Hygienic



RCC Trimix
Road with Paved
Block with Street Light



Garden
with Sitting
Area



Standard Quality
Passenger Elevator



Attractive
Name Plate
& Letter Box



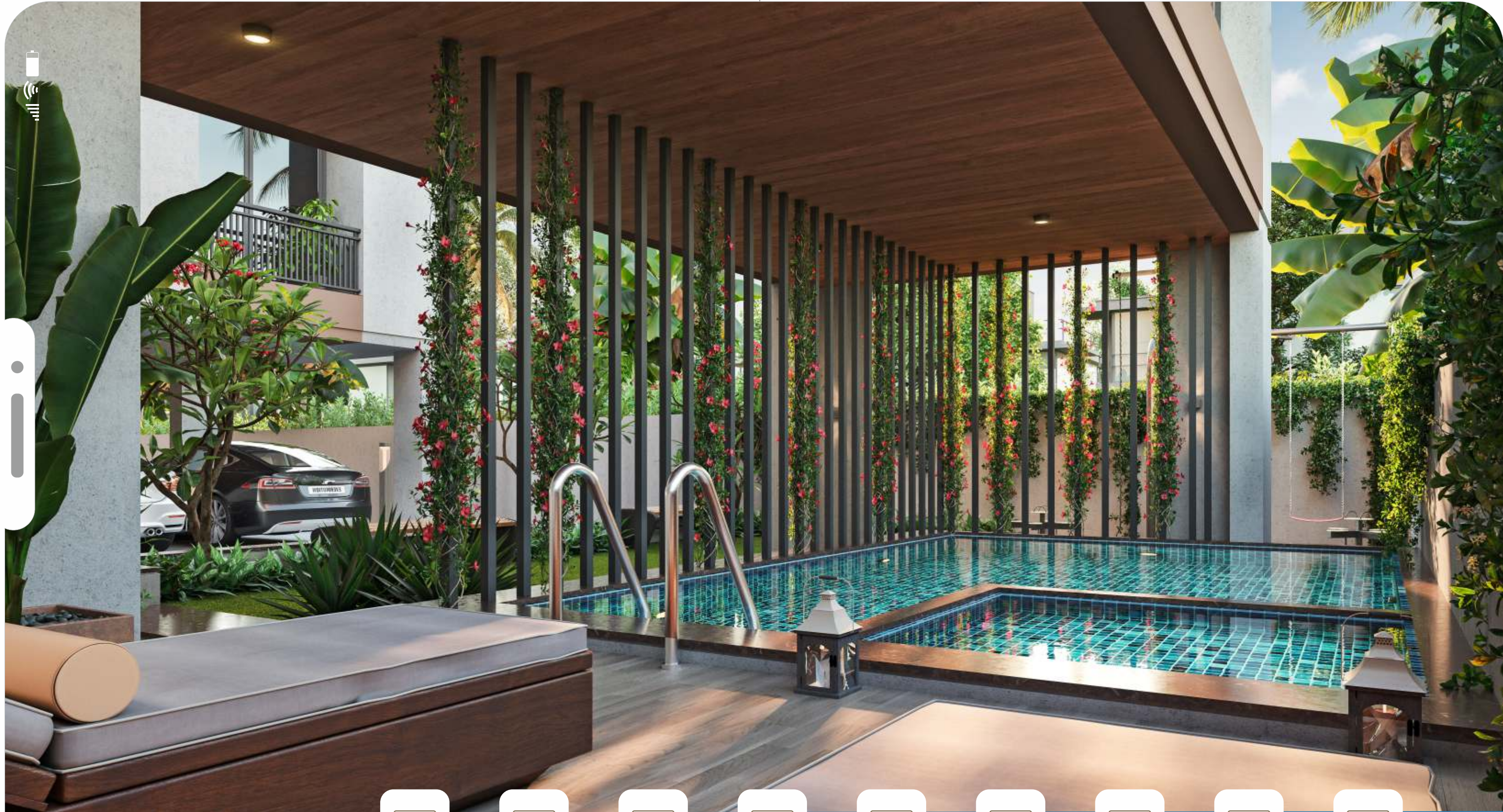
24 Hours
Water Supply



Water Proof



Anti-Termite
Treatment



AMENITIES



Club House



Car Parking



Gymnasium



Game Room



Garden



Children Play Area



Swimming Pool



Indoor Games

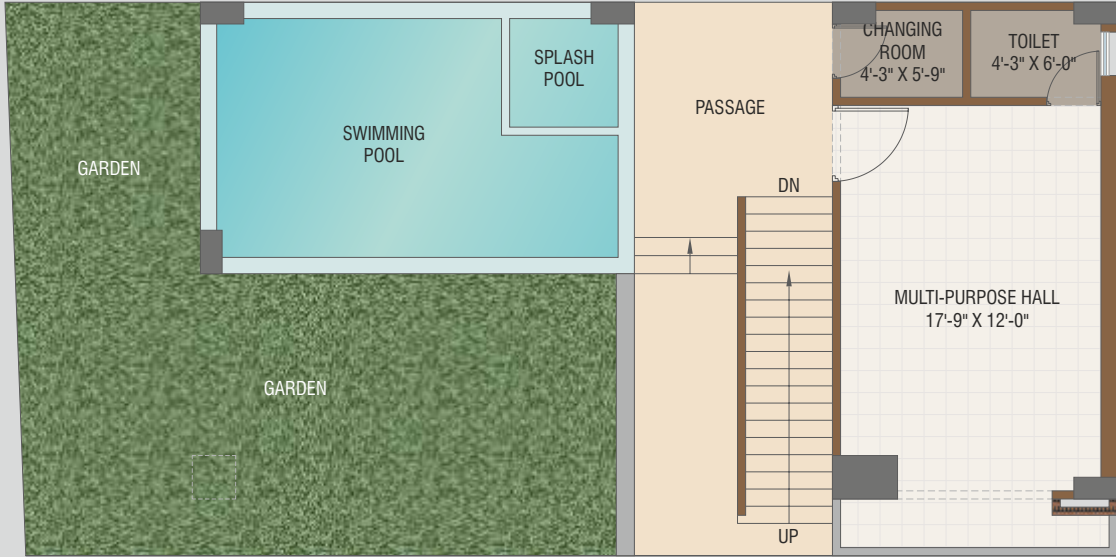


Multipurpose Hall

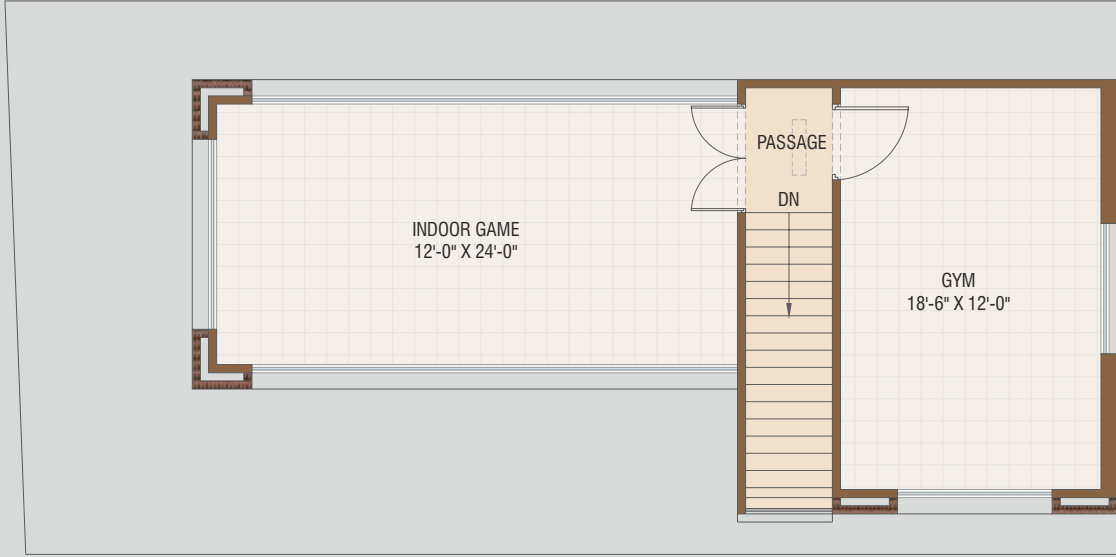


CLUB HOUSE PLAN

GROUND FLOOR



FIRST FLOOR



BASEMENT PLAN



GROUND FLOOR PLAN



SPECIFICATION

STRUCTURE

- Earthquake R.C.C. frame structure as per structure design

WALL FINISH

- Inside walls having smooth plaster with emulsion paints and outside surface acrylic painted

FLOORING

- Superior quality Vitrified flooring
- Paver blocks in parking area

KITCHEN

- Granite top platform with S.S. sink
- Decorative Glazed tiles dedo

DOOR - WINDOWS

- Attractive main door in teak wood frame or equivalent
- Good quality flush door in all bedrooms with laminates on both side
- Aluminum powder coating window
- Safety grill in window

COLOUR

- Asian ultima exterior paint to exterior surface wall and Birla putty finish with asian paint for internal wall surface.

ELECTRIFICATION

- Concealed wiring of standard quality with modular switches
- T.V. point in living room & Master bedrooms
- A.C. point in all bedrooms
- General lighting in common areas

TOILET / PLUMBING

- Standard quality sanitary ware & branded quality plumbing fittings
- Decorative glazed tiles dedo with modern concept
- Ceramic tiles in flooring

TERRACE

- Water proofing treatment with china mosaic tiles flooring

KEYPLAN



PAYMENT TERMS :
05% Booking Amount | 35% within fifteen days of banakhat | 5% After completion of Plinth | 10% on 2nd Slab | 10% 5th Slab | 5% on 7th Slab 5% on Brick & Internal plaster completion | 5% on completion of Sanitary, Lift & Stairs | 5% On outside plumbing & plaster | 10% Lift, Waterpump & Electric Fittings 5% On possession

PLEASE NOTE : Premium quality materials or equivalent branded products shall be used for all construction work. - Right of any changes in dimensions, design & specifications will be reserved with the developer, which shall be binding for all members. - External changes are strictly not allowed. - Development charges, documentation charges, stamp duty, all municipal taxes, GST tax, G.E.B. meter deposit should be levied separate. - Each member needs to pay maintenance deposits separately. - In case of booking cancellation, amount will be refunded from the booking of same premise after deducting 10% of booking amount. - Possession will be given after one month of all settlement of account. - Extra work at the cost of client with prior estimate needs to be given in advance but no change in elevation and plan will be done. - The developer reserve the full right to make any changes. - This brochure does not form a part of agreement or any legal document, It is easy display of project only.

DISCLAIMER : the details , facts , specifications , figures mentioned in brochure are indicative for information purpose only and subject to modifications / compliance required as per RERA act.

Above project is registered under Gujrera.
For further details: visit: www.gujrera.gujarat.gov.in under registered project. RERA REGISTRATION NO.: